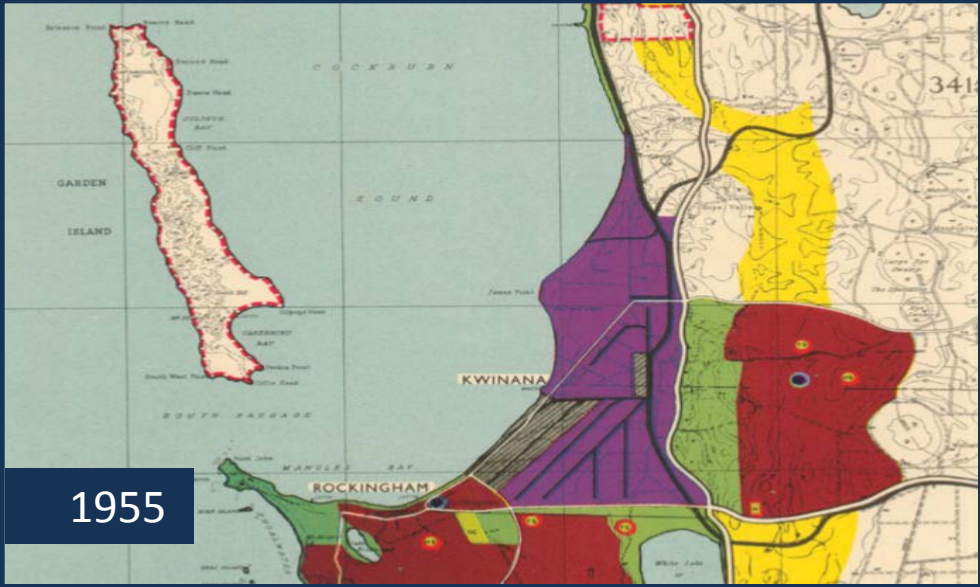




Carol Adams - Mayor
Joanne Abbiss - CEO





Australian Marine
Complex Henderson

Latitude 32

Kwinana Heavy
Industrial Area

Rockingham Industry Zone

FIGURE 2: Indian Ocean Gateway in context





KEY

- Existing Major Roads
- Upgrade of Major Roads
- New Major Roads
- Existing Rail
- Duplication of Rail
11.6km - \$34.8m
- New Rail - \$12m
- Traffic Lights
- FRCAH (Fremantle Rockingham Control Access Highway)
- Investigation for potential freight rail line

ROAD COSTS

(Construction, land acquisition, intersections)

ROWLEY RD

- 1 • 2km \$107.1m
- 2 • 7km \$149.9m
- 3 • 10km \$166.5m

ANKETELL RD

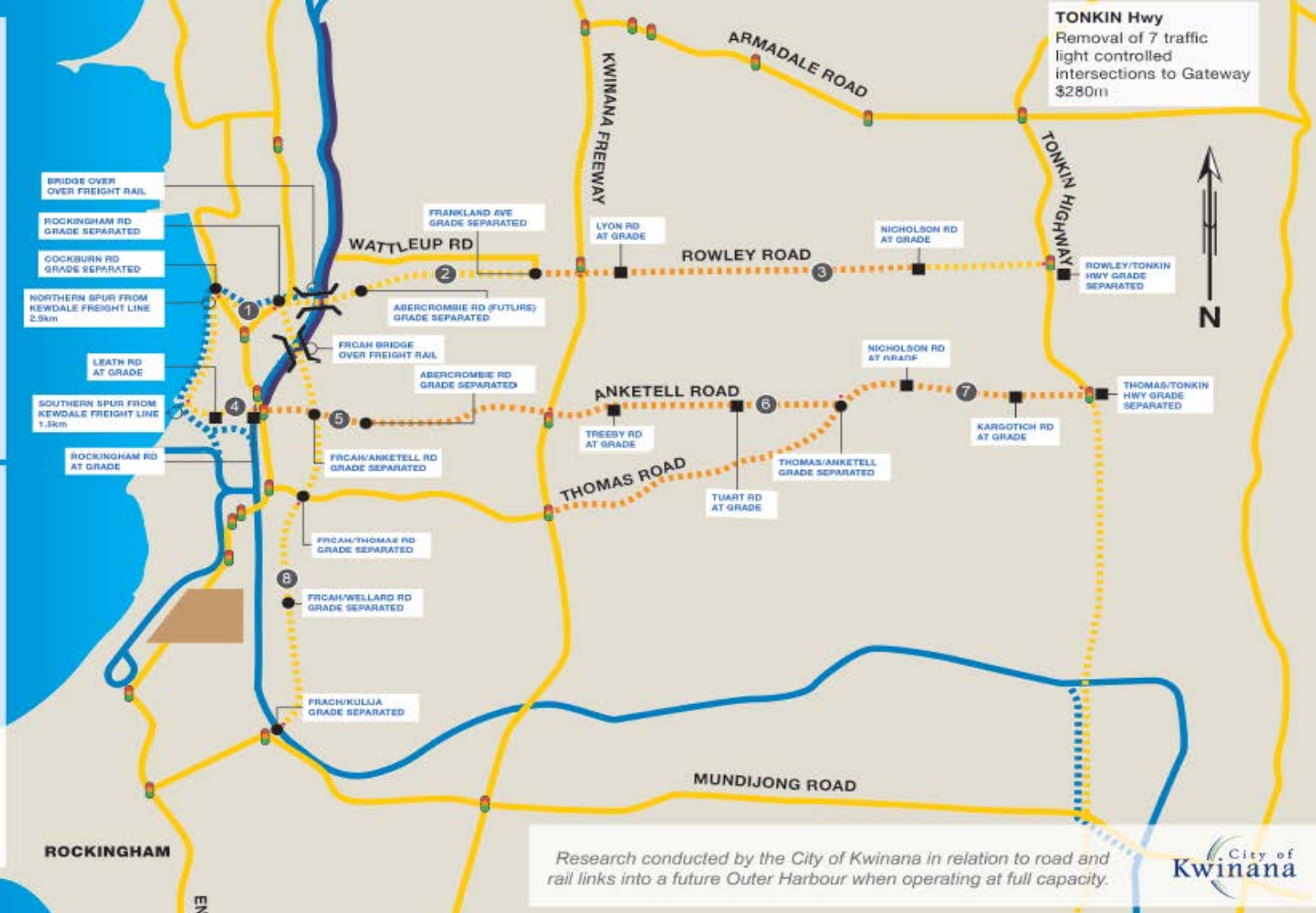
- 4 • 2km \$19.1m
- 5 • 6.25km \$93.4m
- 6 • 6.3km \$56m

THOMAS RD

- 7 • 5.15km \$126m

FRCAH (Rowley to Kullija)

- 8 • 10km \$375m



TONKIN Hwy
Removal of 7 traffic light controlled intersections to Gateway \$280m



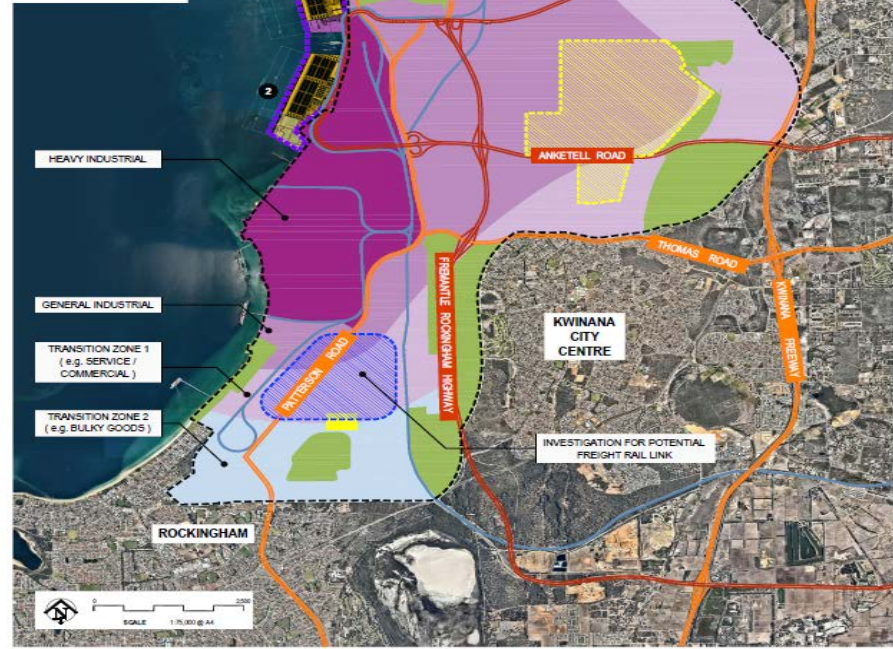
Research conducted by the City of Kwinana in relation to road and rail links into a future Outer Harbour when operating at full capacity.



CONCEPTUAL GRADUATION OF LAND USES

- LEGEND**
- Heavy Industrial
 - General Industrial
 - Transition Zone 1
 - Transition Zone 2
 - Indian Ocean Gateway Port Facilities
 - Freight Road Route
 - Other Main Roads
 - Freight Rail Route
 - Indian Ocean Gateway Protection Zone
 - Residue Disposal Area
 - Public Purposes
 - Conservation
 - Investigation for Potential Freight Rail Link

- NOTES**
- 1 Outer Harbour Stage 1
 - 2 Outer Harbour Stage 2



HEAVY INDUSTRIAL

GENERAL INDUSTRIAL

TRANSITION ZONE 1
(e.g. SERVICE / COMMERCIAL)

TRANSITION ZONE 2
(e.g. BULKY GOODS)

ROCKINGHAM



INVESTIGATION FOR POTENTIAL FREIGHT RAIL LINK





Fremantle



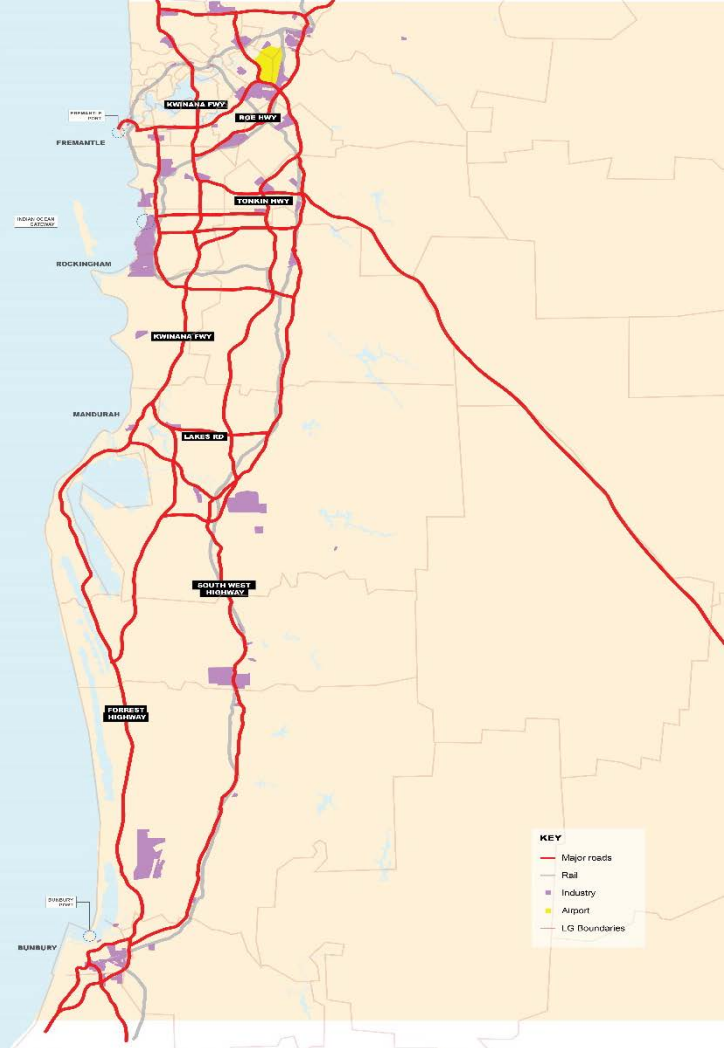
Vancouver, Canada



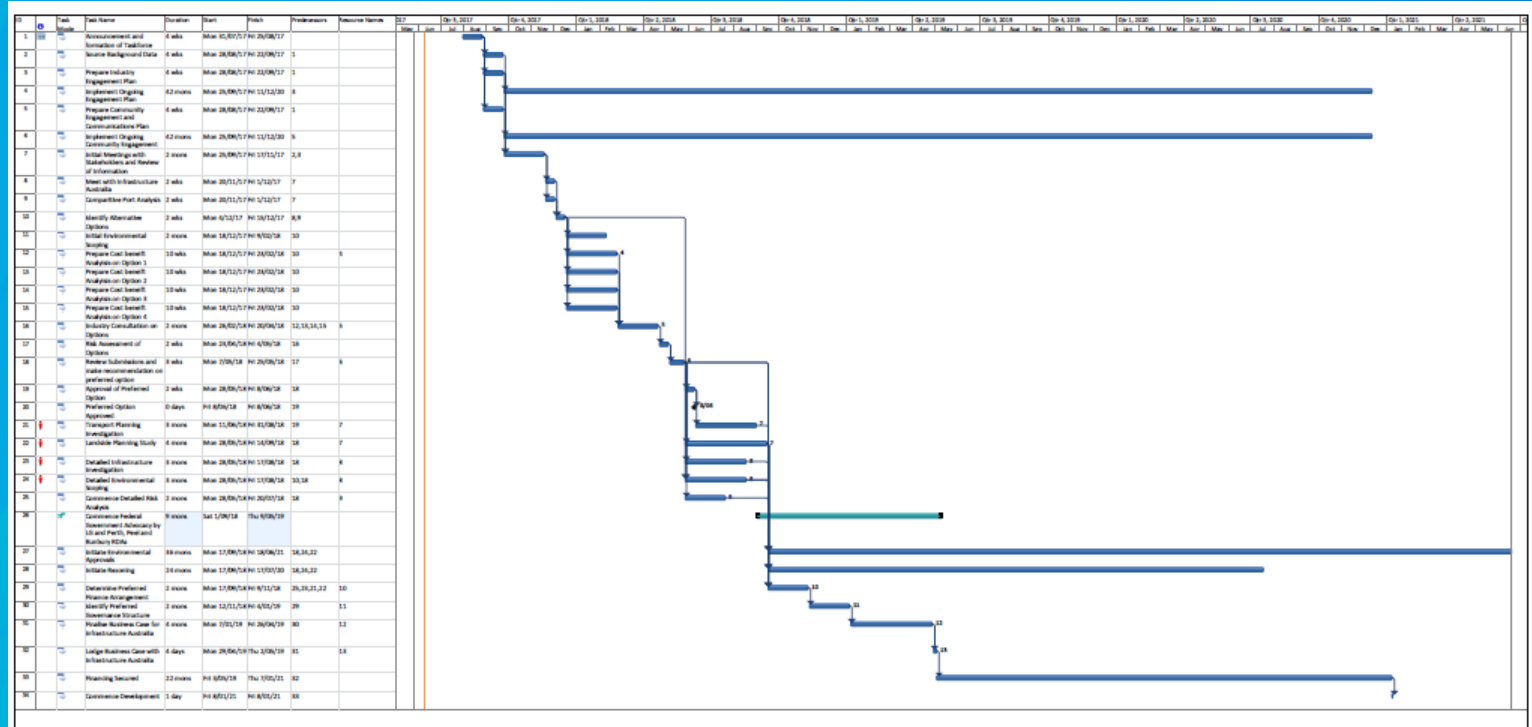
Port of Spain, Trinidad



Liverpool, UK



Timeframe



Fremantle Port

Redevelopment opportunity of 170ha of land for Residential and Commercial Purposes. Potential future TOD and significant high node adjacent to Perth and Fremantle (Similar to Chatswood NSW pictured).



South Quay Redevelopment

City of Fremantle led redevelopment of the South Quay and improved cruise ship arrival destination
\$3.5 billion private investment
3700 Jobs



Cockburn Coast

Redevelopment of the old Power Station and Urban infill with potential new Coogee Station linking in to Metronet
98 hectares of redevelopment
12,000 Residents
Over 3,000 new jobs
Mixed use, Commercial and Residential Development



Indian Ocean Gateway

Culmination of Outer Harbour, Latitude 32, Australian Marine Complex, Kwinana Heavy Industrial area, Rockingham Industrial Zone
23,628 New Jobs
\$42.4 Billion Annual Revenue
6,115 hectare Industrial Estate



HMAS Stirling

RAN's Primary base in WA and home to the Collins Class Submarines and major servicing destination for Naval Vessels.

Renaissance Rockingham

Emerging Innovation and Research Hub based on the Technopole concept and focused on defence ship building and supply chains in partnership with Murdoch University, the Department of Defence and French Businesses.

ROCKINGHAM

FREMANTLE

Coogee

Yangebup

AUSTRALIAN MARINE COMPLEX

OUTER HARBOUR

KWINANA HEAVY INDUSTRIAL AREA

ROCKINGHAM INDUSTRIAL ZONE

LATITUDE 32

KWINANA FREEWAY

ANKET

THOMAS R